

HERMAN

Interactive AI Smart Board

Innovation BeyondSmart

Experience the Power of Intelligence
in Teaching & Learning



Educational Series

www.horionnepal.com



Introduction

HERMAN is a global pioneer in **AI-powered devices and applications**. Established as an R&D outfit in Rinteln, Germany during 2009-10, our award-winning solutions today reach over 15million user across 80+ countries.

With a proven legacy of implementing digital board technology in more than 300,000 classrooms across India, we proudly hold the **industry's highest market share in the board sales** historically in the country.

As Education transitions toward a future-ready paradigm, we Deliver AI-driven solutions that seamlessly integrated traditional teaching with modern learning environments. Beyond education, our portfolio extends to enterprise and consumer segments. **Our vision is to revolutionize the way people work, learn and live by harnessing the power of intelligence.**



HERMAN EP-S1 Series

An advanced AI board designed to transform the teaching experience.



Powered by a
High-Performance
Octa-core Processor.



Patented Optical Touch
Technology for Superior
Real-time Writing
Experience.



Infinite Canvas: Add
Unlimited content to
Support dynamic Teaching
Sessions.



Edge AI Capabilities:
Works seamlessly without an
Internet connection



Edge AI Capabilities:
Works seamlessly without an
Internet connection

HERMAN EP-S1

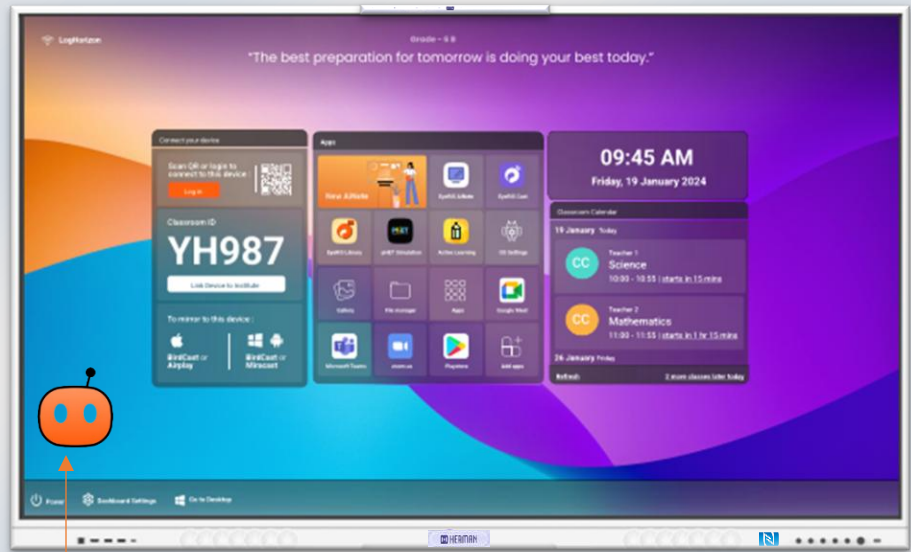
System Technical Specifications comes with AI Integrations

Brand	HERMAN	
Category	Specification	
Display Size	75 Inch (Diagonal)	
Display Type	Ultra HD IPS LED A+	
Colors & Contrast Ratio	1.07 billion colors. Dynamic Contrast 100000:1, 1300:1(type)	
LED Viewing Angle	HDR Display Horizontal 179°, Vertical 179° or better	
Resolution	3840 x 2160	
Panel Type	LED IPS Panel	
Refresh Rate	60Hz	
Aspect Ratio	16:9	
Contrast Ratio	5000:1	
Brightness	450 Nits	
LED Lifespan	≥50,000 hours	
Gap Between Glass & Screen	Zero Gap Air Bonding	
Eye Care Filter	Removes blue light emission from display to create a safe Environment for teacher and students.	
Technology	Advance Edge Optical Toch	
Touch Response Time	≤2ms	
Touch Technology	Optical Touch (±3mm or better) with IR	
Multi-Touch Gestures	Palm rejection, eraser gesture, seamless writing/erasing	
Touch Resolution	32767 x 32767 or better	
Touch Points	40 simultaneous Touch points (windows) 20 points (Android)	
Toughened Glass	3mm thickness, Mohs 9H hardness, anti-glare, anti-scratch	
Gesture Detection	Palm Detection as eraser, intelligently rejects input of accidental from palm of other objects while writing along multitouch zoom pan detection.	
OS	Android 14.0	
Chipset	CPU	Octa (8) core ARM Processor, 8 x A55 CPU
	GPU	Mali G52 MP2 (4 cores)
Memory & Storage	Memory	8GB DDR4
	Storage	128GB (expandable) & Unlimited Cloud Storage
Camera	48 / 13MP wide angle camera	
Microphone	Built-in 8-array Microphone, 8m pickup range	
NFC	Yes (Card reader Screen lock & unlock)	
Wireless	Bluetooth 5.2: Yes 802.11 a/b/g/n Dual Band 2.4G and 5GHz: Yes Hotspot Support: Yes	
Stereo Speakers	Front Facing, Hi-Fi, Stereo Sound output with 20W x 2 with 8Ω impedance, built-in subwoofer & Surround, Bass reflex with dual passive radiators.	
I/O Ports	Front	USB 3.0 x1 (Shared), USB 2.0 x 1 (Android), USB Type C x 1, Touch USB x 1, HDMI x 1
	Back & Bottom	HDMI IN x 2, VGA IN x 1, VGA Audio x 1, Touch USB x 1, USB 3.0 x 1, USB 2.0 x 1, MicroSD Card x 1, OPS x 1 & Bottom: LAN x 1, SPDIF x 1, RS232 x 1

Power Consumption	Voltage	Voltage: 100 V ~ 240 V/AC, 50/60 Hz
	Power	75" ≤300W
	Stand By	Stand-by: <0.5 W
Dimensions & Weight	Dimensions	75": 1730*98*1250mm
	Weight	75": N.W (51KG), G.W (60KG)
Temperature		Working Temp: 0°C ~ 40°C , Storage Temp: Minus 10°C ~ 60°C,
Accessories In the Box		Antenna x 2, Remote, Power Cable, USB touch Cable, HDMI Cable (1.5M), User Manual, Wall Mount Set
Warranty		3 years onsite support
Installation & Training		Installation by bidder, 1 training by bidder
Whiteboard Interactive Software Features		
Feature	Description	
Ai Based content Creation Tool	• Life Time AI function subscription without additional payment.	
	• Default White board app can generate Power point (PPT Presanction) on given topic	
	• AI based Lesson Plan Generator as per Guidelines.	
	• AI based Document Summarizer: Summaries, any online video, document, and image.	
	• AI based Quiz generator.	
	• AI based Math/Chemical equation solver with step-by-step explanations.	
	• AI based Text-to-image generator.	
	• AI based "Circle to Search" (select image areas for concept search)	
Collaboration	• Live multi-student cursor tracking	
	• Remote Device management feature	
	• QR code invite for shared whiteboarding	
	• Multiple User login in whiteboard app with separate could storage per user.	
	• Hybrid class support (manage remote/in-class students)	
Content Tools	• Infinite canvas with palm-erase gestures	
	• Multi-media import (PDF, PPT, videos)	
	• 3D/VR science labs & simulations	
	• Full library (indexed by class/subject)	
Annotation	• Pen/shape tools (custom colors/thickness)	
	• Pixel/region eraser	
	• On-screen annotation over docs/videos	
	• Visualizer integration (annotate on live camera feed)	
Productivity	• Screen recording (FHD+)	
	• Split-screen multitasking	
	• Wireless file sharing (via QR/access code)	
	• Snip tool & document scanner	
UI/UX	• Consistent interface across Android/Windows	
	• Floating quick-access toolbar	
	• Customizable menus (side/floating)	

Android OS Features	
Productivity: Split-screen, Play Store, 4K YouTube, one-click screenshots.	
Controls: Gestures (sleep/float menu), touch on/off button, USB sharing	
Comfort and Prevent: Blue light filter, sound equalizer	
Product Certification, Authorization and Warranty Requirements.	
Authorized Certifications	OEM must provide authorized Certification.
Certificate	Bidder must provide, STQC (ERTL) CE, ISO/RoHS & FCC Copy of Certification.
Manufacturer's Authorized	Bidder must provide Manufacturer's Authorization Letter.
Warranty and Service Support	3 years warranty and Service Support Commitment Letter.

Build in 4K Camera and 8-array Mic



Bright AI Agent

A Complete AI Class Solution For AI-ready Learning Spaces

- AI Assessment Creation
- AI Content Creation
- AI Lesson Plan **IN 10 SEC**
- AI Whiteboard
- AI Quiz Generation
- AI Report Generation

